

# CURRENT TRANSFORMERS / DC SHUNTS

## Moulded Case

# TAS125, TAS127, TAS127B



### TAS125

**Busbar window** 127x54mm  
**Secondary Terminals** M4 screws/fast-on connectors  
**Weight** 2500g

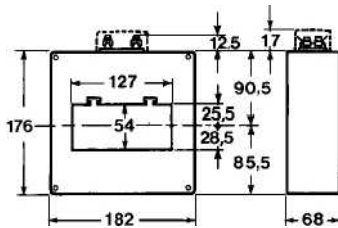
Supplied with busbar mounting bracket



### TAS127B

**Busbar window** 127x54mm  
**Secondary Terminals** Pillar Screw terminal  
**Weight** 1300g

Supplied with busbar mounting bracket

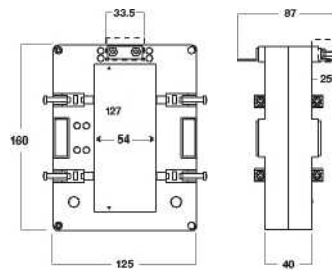


**Option:** Terminal cover

Primary current A	Burden	
	cl. 0-5 VA	cl. 1 VA
400	3	6
500	6	12
600	15	30
800	20	40
1000	20	40
1200	25	50
1500	40	80
1600	40	80
2000	50	100
2500	60	120
3000	60	120
4000	100	200

double ratio with secondary selection		
400-800	3-20	6-40
2000-4000	50-100	100-200

1A or 5A secondary



**Option:** Horizontal mounting (terminals on long side of CT - Ref TAS127BH)

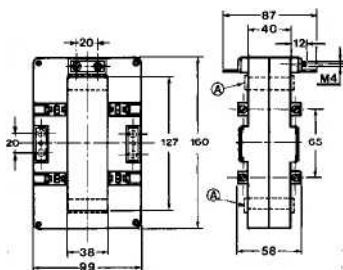
Primary current A	Burden		
	cl. 0-5 VA	cl. 1 VA	cl. 3 VA
400	1	7	10
500	3	10	14
600	5	12	17
700	8	15	20
750	10	15	20
800	10	15	20
1000	12	20	25
1200	15	25	30
1250	15	25	30
1500	20	30	40
1600	20	30	40
2000	25	40	50
2500	30	50	60
3000	40	60	60
3200	40	60	60
4000	50	60	60
5000	60	60	60

1A or 5A secondary

### TAS127

**Busbar window** 127x38mm  
**Secondary Terminals** M4 screws pillar  
**Weight** 1500g

Supplied with busbar mounting bracket



**Option:** Spacing device for 100mm bar

**Option:** Horizontal mounting (terminals on long side of CT - Ref TAS127H)

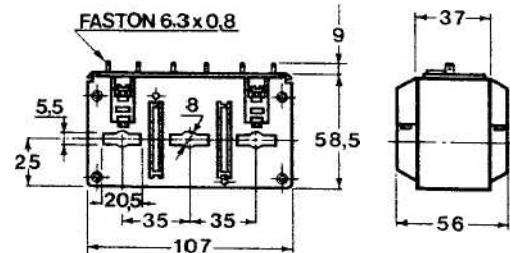
Primary current A	Burden		
	cl. 0-5 VA	cl. 1 VA	cl. 3 VA
400	-	3	6
500	2	4	8
600	4	6	10
700	4	8	10
750	4	8	10
800	4	8	10
1000	6	10	-
1200	8	12	-
1250	8	12	-
1500	10	15	-
1600	10	15	-
2000	15	20	-
2500	20	25	-
3000	25	30	-
3200	25	30	-
4000	30	40	-

double ratio with secondary selection		
400-800	-	3-8
2000-4000	15-30	20-40

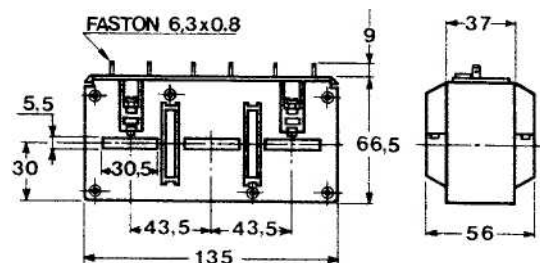
1A or 5A secondary

### 3-PHASE CT'S

**TA320** Ratios from 100/5A to 250/5A



**TA330** Ratios from 150/5A to 4000/5A



#### Information Required With Order

• Model • Ratio • Special requirements if applicable

Example: Model TAS127 Current Transformer Ratio 2000/5A