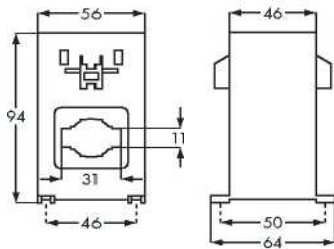




TAI300

Cable Aperture 22mm dia
Busbar Window 31x11mm,
 21x14mm
Secondary Terminals M4 screws/
 6.3x0.8mm fast-on
Weight 290g

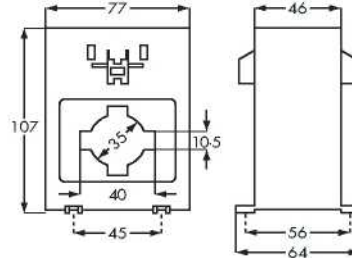


| Primary current A | Burden | | |
|----------------------|---------------|-------------|-------------|
| | cl. 0-5 VA | cl. 1 VA | cl. 3 VA |
| 100 | - | 2 | 3 |
| 120 | - | 2-5 | 3-5 |
| 125 | - | 2-5 | 3-5 |
| 150 | - | 3-5 | 4-5 |
| 200 | 3 | 4 | 6 |
| 250 | 5 | 6 | 8 |
| 300 | 6 | 8 | 9 |
| 400 | 7-5 | 10 | 12 |
| 500 | 10 | 12 | 15 |
| 600 | 12 | 15 | 15 |

1A or 5A secondary

TAI400/TAI402

Cable Aperture 35mm dia
Busbar Window 40x10.5mm
Secondary Terminals M4 screws/
 6.3x0.8mm fast-on
Weight 400g

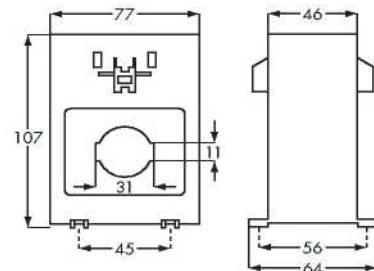


| Primary current A | Burden | | | |
|----------------------|--------------|------------|------------|--------------|
| | TAI400 | | | TAI402 |
| | cl.0-5 VA | cl.1 VA | cl.3 VA | cl.0-2 VA |
| 50 | - | - | 1-5 | - |
| 60 | - | - | 2 | - |
| 70 | - | - | 3 | - |
| 75 | - | - | 3 | - |
| 80 | - | - | 3 | - |
| 100 | - | 1 | 4 | - |
| 120 | - | 2 | 5 | - |
| 125 | - | 2 | 6 | - |
| 150 | 1 | 3 | 6 | - |
| 200 | 1-5 | 3 | 6 | 1-5 |
| 250 | 2-5 | 5 | 8 | 2-5 |
| 300 | 4 | 8 | 12 | 2-5 |
| 400 | 8 | 12 | 15 | 4 |
| 500 | 10 | 12 | 15 | 6 |
| 600 | 10 | 12 | 15 | 8 |
| 700 | 10 | 12 | 15 | - |
| 750 | 10 | 12 | 15 | 8 |
| 800 | 10 | 12 | 15 | 8 |
| 1000 | 10 | 12 | 15 | 10 |

1A or 5A secondary

TAI310/TA312

Cable Aperture 28mm dia
Busbar Window 31x11mm
Secondary Terminals M4 screws/
 6.3x0.8mm fast-on
Weight 370g

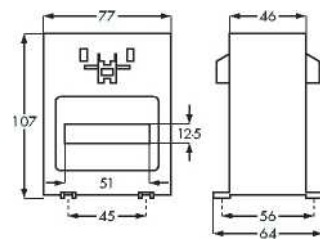


| Primary current A | Burden | | | |
|----------------------|--------------|------------|------------|--------------|
| | TAI310 | | TAI312 | |
| | cl.0-5 VA | cl.1 VA | cl.3 VA | cl.0-2 VA |
| 50 | - | - | 2 | - |
| 60 | - | - | 3 | - |
| 75 | - | - | 3-5 | - |
| 80 | - | 1-5 | 3-5 | - |
| 100 | - | 2 | 6 | - |
| 120 | 1 | 2 | 8 | - |
| 125 | 1 | 2 | 8 | - |
| 150 | 1-5 | 3-5 | 10 | - |
| 200 | 4 | 8 | 12 | 1-5 |
| 250 | 6 | 12 | 15 | 2-5 |
| 300 | 10 | 15 | 20 | 5 |
| 400 | 15 | 20 | 25 | 8 |
| 500 | 20 | 25 | 30 | 10 |
| 600 | 25 | 25 | 30 | 15 |

1A or 5A secondary

TAI500

Busbar Window 51x12.5mm
Secondary Terminals M4 screws/
 6.3x0.8mm fast-on
Weight 400g



| Primary current A | Burden | | |
|----------------------|---------------|-------------|-------------|
| | cl. 0-5 VA | cl. 1 VA | cl. 3 VA |
| 250 | - | - | 3 |
| 300 | - | 2 | 4 |
| 400 | - | 4 | 6 |
| 500 | 2 | 4 | 6 |
| 600 | 6 | 8 | 10 |
| 800 | 8 | 10 | 12 |
| 1000 | 10 | 12 | 15 |
| 1200 | 12 | 15 | 20 |

1A or 5A secondary