



PRESSURE TRANSMITTER JPX SERIES



BRIEF DESCRIPTION

Pressure transmitters are used for measuring the relative (gauge) pressure in liquids and gases. The pressure transmitter incorporates a thick-film strain gauge as a measuring device. The pressure sensor has an aluminium-oxide (Al_2O_3) ceramic base material. The pressure is converted into an electrical signal.

TECHNICAL DATA

Ranges	bar	0 (-1) ÷ 1,6...40	0 ÷ 60...100
Overload limit	-	3 x full scale	2 x full scale
Bursting pressure max.	-	5 x full scale	3 x full scale

Supply (U)..... 10 ÷ 30V DC (for output 4 ÷ 20mA and 1 ÷ (5) 6V)
 11,5 ÷ 30V DC (for output 0 ÷ 10V)
 5V DC (for output 0,5 ÷ 4,5 V)

Output signal 4 ÷ 20 mA (2-wire) $Burden(R) \leq (U - 10V) / 0,02A$
 0,5 ÷ 4,5V $Burden(R) \geq 20 k\Omega$
 1 ÷ (5) 6V $Burden(R) \geq 10 k\Omega$
 0 ÷ 10V $Burden(R) \geq 10 k\Omega$

Deviation from characteristic $\leq 0,5\%$ of full scale
 Stability per year $\leq 1\%$ of full scale
 Ambient temperature error
 within range -20 ÷ 85°C zero $\leq 0,04\% / ^\circ C$
 span $\leq 0,04\% / ^\circ C$
 Thermal hysteresis $\leq \pm 0,8\%$ of full scale
 Permissible temperature:
 ambient..... -20 ÷ 125°C
 medium..... -30 ÷ 125°C
 storage -40 ÷ 125°C
 Protection class IP 65

Pressure connection pipe 1/4"
 Electrical connection terminal box to DIN 43650

Parts:

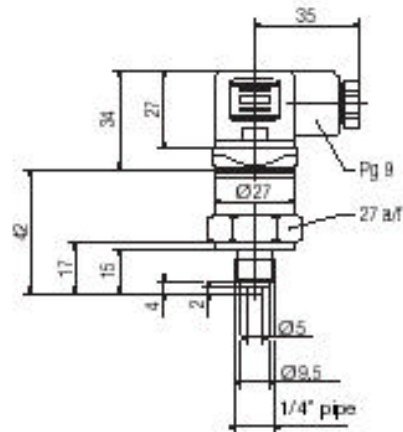
-sensor Al_2O_3 , Viton®
 -pipe stainless steel
 -housing stainless steel, EPDM

Nominal position any
 Weight 100 g

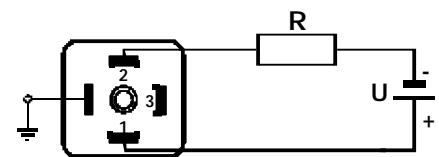
PRESSURE RANGES

0 ÷ 1,6 bar	- 1 ÷ 0,6 bar
0 ÷ 2,5 bar	- 1 ÷ 1,5 bar
0 ÷ 4 bar	- 1 ÷ 3 bar
0 ÷ 6 bar	- 1 ÷ 5 bar
0 ÷ 10 bar	- 1 ÷ 9 bar
0 ÷ 16 bar	- 1 ÷ 15 bar
0 ÷ 25 bar	- 1 ÷ 24 bar
0 ÷ 40 bar	
0 ÷ 60 bar	
0 ÷ 100 bar	

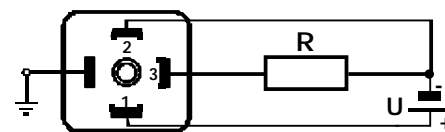
DIMENSIONS



ELECTRICAL CONNECTION



4-20mA output (2-wire current loop)



Other outputs