

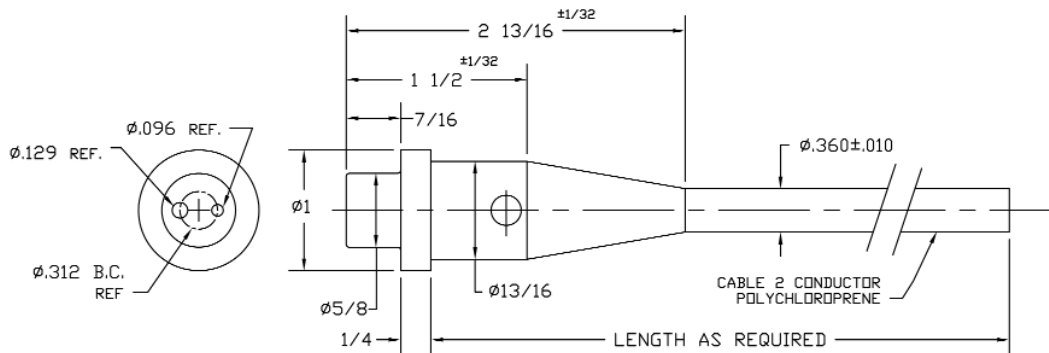
Massa C1M2/C1F2 Underwater Connectors



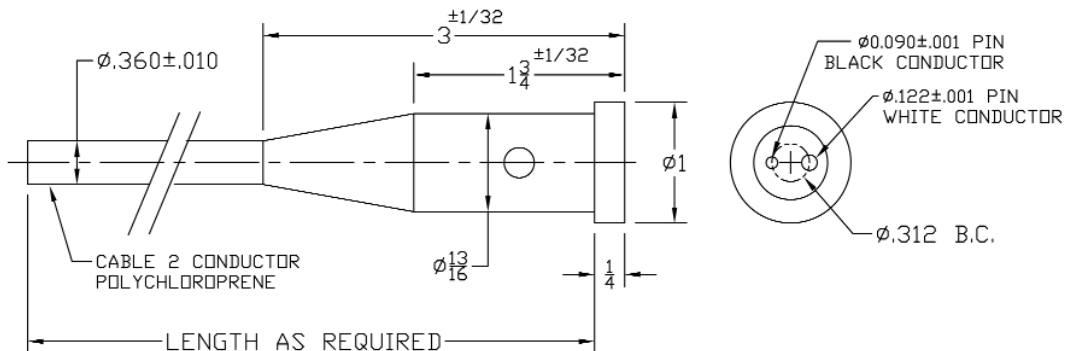
Photograph of C1M2 and C1F2 Connectors with Retaining Rings

Massa C1M2 male and C1F2 female 2-conductor in-line Underwater Connectors were developed for the oceanographic community to provide highly reliable underwater connection. Massa has manufactured and sold over 100,000 connector pairs, and some have been successfully used for over 20 years in the ocean. There has never been a failure of a connector reported to Massa.

Massa typically supplies transducers with C1F2 Female Connectors attached. C1M2 Male Connectors can be purchased separately to complete the mating connection. The standard C1M2 is attached to a 5 foot cable with a retaining ring included, but connectors can be fabricated with any length of cable required.



Outline Drawing of a C1M2 Male Connector for Mating to Massa Underwater Transducers (without retaining ring)



Outline Drawing of a C1F2 Female Connector Supplied on Massa Underwater Transducers (without retaining ring)



Vydas International Marketing
 Swan House Passfield Business Centre
 Lynchborough Road Passfield
 Hampshire GU30 7SB United Kingdom
 Tel: 44(0)1428 751822 Fax: 44(0)1428 751833
 Email: info@vydas.co.uk Web: www.vydas.co.uk

MASSA PRODUCTS CORPORATION
 280 Lincoln St., Hingham, MA 02043 U.S.A.
 Tel: 781-749-4800 Fax: 781-740-2045
 Toll Free in USA: 800-962-7543
 E-mail: sales@massa.com
 Web Site: www.massa.com