

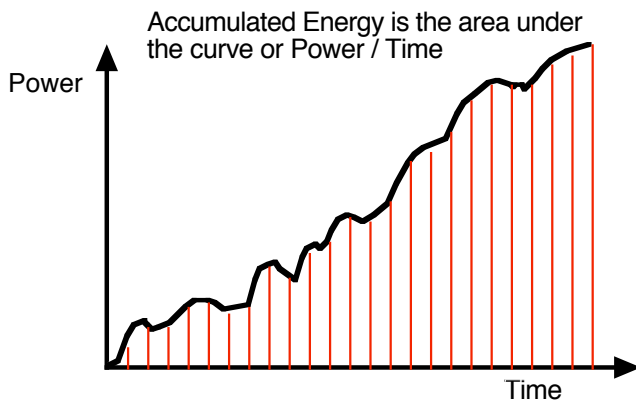
UPC-KWH

Accumulates Kilowatt Hours, Minutes, Seconds



DESCRIPTION ;

The UPC-KWH measures true power (KW) and momentarily closes a relay contact every Kilowatt Hour, Kilowatt Minute or Kilowatt Second, which is selectable. The pulse can signal a computer, meter or counter for power accumulation. An analog 0-10V output reflects the instantaneous power and can drive a meter or computer directly.



Measures Energy Usage

APPLICATIONS :

- Batch Mixing - Accumulates total power into the mixing process for consistent batches.
- Extruders - Accumulated power indicative of throughput.
- Power usage

SPECIFICATIONS :

Field Scaleable - 3 KW to 100 KW Full Scale

Measures 3PH, 1PH or DC Power

Accuracy - .5% of Full Scale

Pulse - Dry contact 30V @ 50ma. max
50 ms duration

Analog Output - 0-10V 5ma. max

Response Time - 50 ms

Power Input - 120VAC @ 9VA

Dimensions - 1-3/4" x 8" x 5-3/8"

CALIBRATION OF FULL SCALE KILOWATTS :

Open the access port (2 screws) and remove the J1 jumper. Using an Ohm Meter adjust 1K ohm per KW across TP 1 and TP 2 by turning the Course and Fine adjustments. Replace the J1 jumper.

Example:

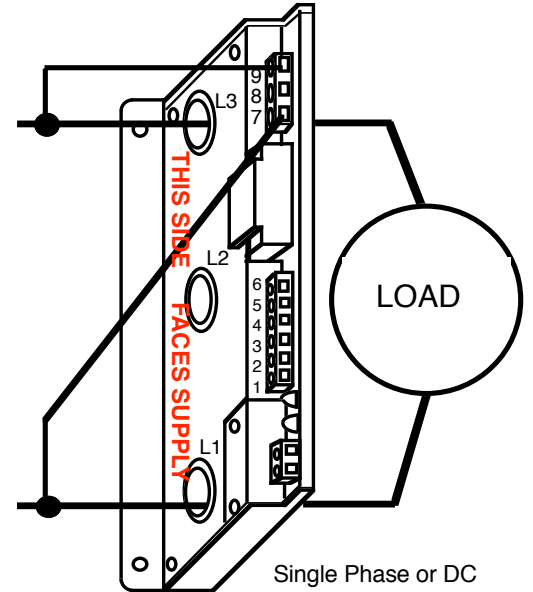
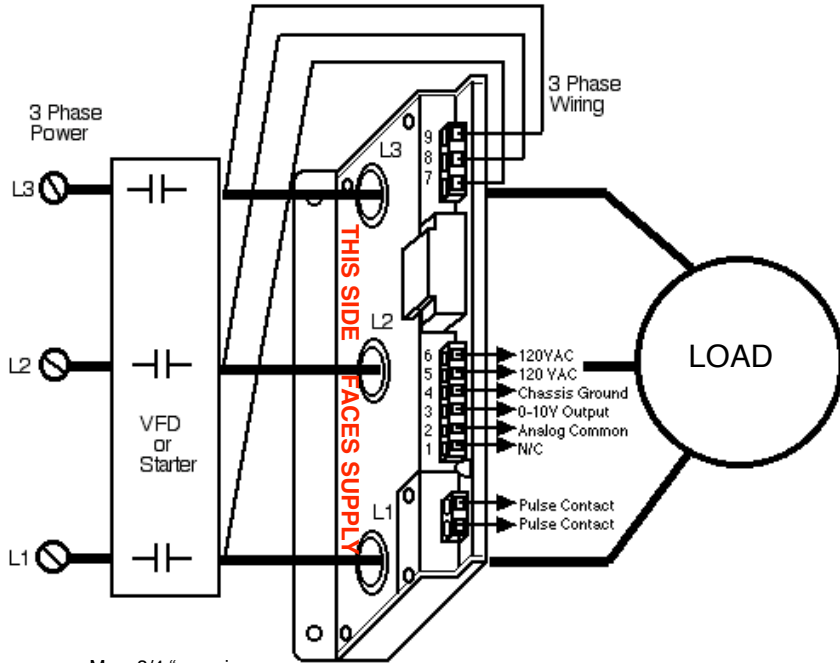
5K ohms = 5KW Scale, 50K ohms = 50 KW Scale
3KW Minimum Scale. 100 KW Maximum Scale.

OUTPUTS:

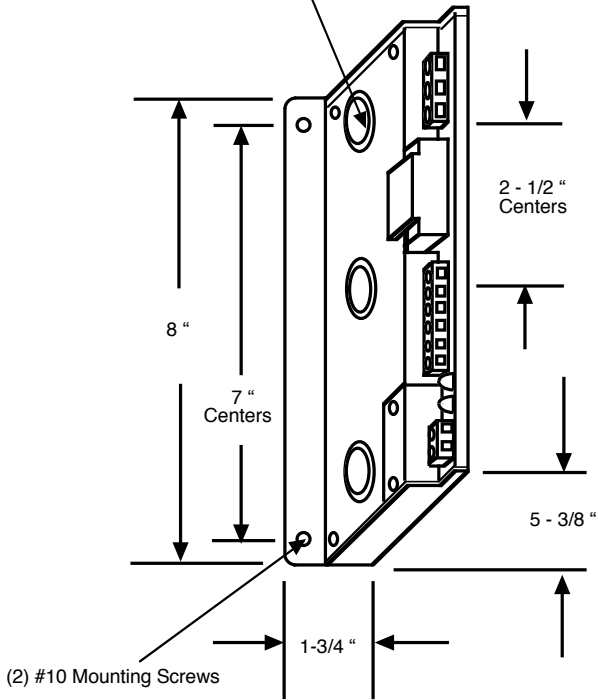
The Analog 10V signal is proportional to the adjusted scale. 0 is Zero KW and 10V is Full Scale KW.

The Pulse Output is a reed relay that is jumper configured to mean Kilowatt Hours, Kilowatt Minutes or Kilowatt Seconds. Jumper block is located under the access port next to the scaling adjustments. The PULSE LED will indicate a contact output.

Wiring Diagram and Mounting



Max. 3/4" opening
5/8" with grommets



- Terminal Side faces the SUPPLY (VFD, Heater Controller or Starter).
- Motor conductors for each phase in the L1, L2, L3 windows MUST MATCH the voltage connections to terminals 7 (L1), 8 (L2) and 9 (L3). Voltage samples can be taken using #20 or larger wire. These are high impedance inputs and the current will be less than 1 ma.
- UPC-KWH mounts on the output side of VFD's or Heater Controllers.
- The window diameter is 5/8" clearance with the grommets in place. With grommets removed the clearance is 3/4"
- DO NOT over torque the terminal strip screw clamps. They are designed to stay tight and do not have to be over tightened.