



TP-2 SINGLE PHASE INSTALLATION

The TP-2-1PH senses the electrical power input to a motor (horsepower). The Output is a 4-20MA LOOP POWERED analog signal proportional to power.

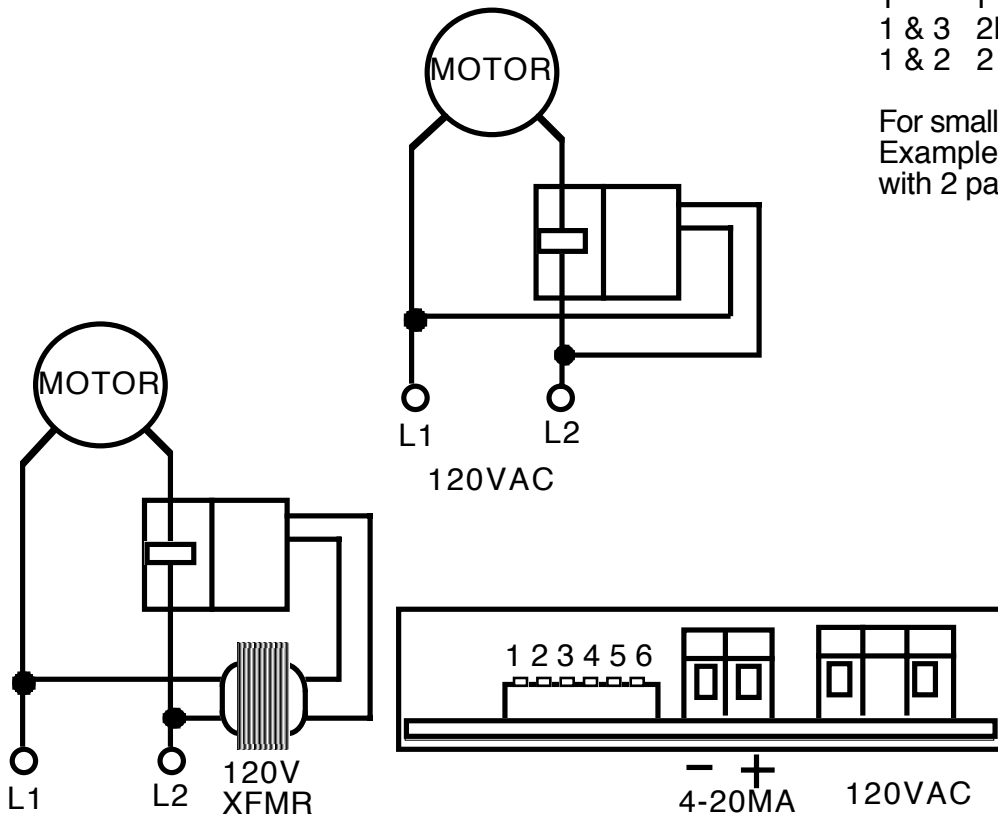


VOLTAGE

120VAC is the voltage input. If the line voltage is greater than 120V use a step-down transformer to step-down to 120V. It is ok to ground the secondary

CURRENT

The current signal is taken from the HOT leg. Pass this wire directly through the window in the TP-2.



Use transformer for voltages greater than 120VAC

Analog Output

4-20MA - Loop Powered. Max. Loop not to exceed 28VDC
The Analog output uses the Loop Power and controls the 4-20MA.

Capacity

Select the capacity by turning 1 of the dip switches ON.
Full Scale HP @ 120V nominal
Switch

6	1/16HP
5	1/8 HP
4	1/3 HP
3	1/2HP
2	1HP
1	1 1/2HP
1 & 3	2HP
1 & 2	2 1/2HP

Voltages other than 120V
Multiply HP scale by :
208 = 1.7
240 = 2
480 = 4

For smaller motors take additional turns
Example: 2 HP reduces to 1 HP with 2 passes through window.

